



# Mentor UT

PROBE / SCANNER / SOFTWARE / ACCESSORY  
CONFIGURATION TOOL AND PART NUMBER GUIDE

APRIL 2016

# Mentor UT Base Kit



## MENTOR UT CORROSION: P/N 100N3883

### Containing:

- Mentor UT Base Instrument
- Mentor AC/DC Power Supply\*
- External Battery\*
- (3) Power Cords: USA, UK, and European\*
- Encoder Connectivity Module\*
- Mentor Create Software on USB
- Soft Carrying Case\*
- Transport Case\*
- Manual on USB

\* Common with Mentor EM



Or pair MENTOR UT CORROSION with a DM probe as a kit!

Part #: MENTOR-UT-CORR1

Includes P/N 100N3883 + a DM probe / cable.

# Mentor UT Base Kit

## BILL OF MATERIALS (P/N 100N3883)

COMPONENT	COMPONENT DESCRIPTION	QUANTITY
04M5880	Assembly, base unit, Mentor UT	1
02M2936	Mentor AC/DC power module	1
051-085-220	Part-cord Belden#17251	1
081-005-669	Line cord, NKW3, KK #05669	1
104M1207	UK power cord	1
MENTOR-UTCA	Encoder buzzer module, Mentor EM adapter	1
100N4002	Mentor UT shipping case	1
MENTOR-RBAT	Mentor create USB	1
112M4767	Assembly, Mentor remote battery V2	1



# Mentor UT Connectivity and Probe Modules



# Mentor UT - DM Probe Acoustic Module and Housings

PART NUMBER	PART NAME	DESCRIPTION
DMARRAY_MOD1	DM Acoustic Module for Modular Probe	Wearable Acoustic Module ONLY for Mentor UT Modular DM Probe. 5MHz. 1.5mm Pitch
DMCABLE_3M_TOP	Modular Probe Housing - 3M top exit	Modular Probe Housing - 3M top exit - DOES NOT INCLUDE acoustic module. This must be combined with an acoustic module for a complete probe.
DMCABLE_3M_RT	Modular Probe Housing - 3M side exit	Modular Probe Housing - 3M side exit - DOES NOT INCLUDE acoustic module. This must be combined with an acoustic module for a complete probe.
DMCABLE_6M_TOP	Modular Probe Housing - 6M top exit	Modular Probe Housing - 6M top exit - DOES NOT INCLUDE acoustic module. This must be combined with an acoustic module for a complete probe.
DMCABLE_6M_RT	Modular Probe Housing - 6M side exit	Modular Probe Housing - 6M side exit - DOES NOT INCLUDE acoustic module. This must be combined with an acoustic module for a complete probe.
DMCABLE_10M_TOP	Modular Probe Housing - 10M top exit	Modular Probe Housing - 10M top exit - DOES NOT INCLUDE acoustic module. This must be combined with an acoustic module for a complete probe.
DMCABLE_10M_RT	Modular Probe Housing - 10M side exit	Modular Probe Housing - 10M side exit - DOES NOT INCLUDE acoustic module. This must be combined with an acoustic module for a complete probe.
DMCABLE_16M_TOP	Modular Probe Housing - 16M top exit	Modular Probe Housing - 16M top exit - DOES NOT INCLUDE acoustic module. This must be combined with an acoustic module for a complete probe.
DMCABLE_16M_RT	Modular Probe Housing - 16M side exit	Modular Probe Housing - 16M side exit - DOES NOT INCLUDE acoustic module. This must be combined with an acoustic module for a complete probe.



# Mentor UT - DM Non-Modular Probes

PART #	PART NAME	DESCRIPTION
115-110-020	Dual Linear (aka DM array) 3M, 1.5mm	32-Element DM Array for Mentor UT. 5MHz. 1.5mm pitch. 3M cable.
115-111-020	Dual Linear (aka DM array) 6M, 1.5mm	32-Element DM Array for Mentor UT. 5MHz. 1.5mm pitch. 6M cable.
115-112-020	Dual Linear (aka DM array) 10M, 1.5mm	32-Element DM Array for Mentor UT. 5MHz. 1.5mm pitch. 10M cable.
115-113-020	Dual Linear (aka DM array) 16M, 1.5mm	32-Element DM Array for Mentor UT. 5MHz. 1.5mm pitch. 16M cable.
115-110-021	Dual Linear (aka DM array) 3M, 0.75mm	32-Element DM Array for Mentor UT. 5MHz. 0.75mm pitch. 3M cable.
115-111-021	Dual Linear (aka DM array) 6M, 0.75mm	32-Element DM Array for Mentor UT. 5MHz. 0.75mm pitch. 6M cable.
115-112-021	ModulDual Linear (aka DM array) 10M, 0.75mm	32-Element DM Array for Mentor UT. 5MHz. 0.75mm pitch. 10M cable.
115-113-021	Dual Linear (aka DM array) 16M, 0.75mm	32-Element DM Array for Mentor UT. 5MHz. 0.75mm pitch. 16M cable.



# Mentor UT - DM Probes – Wear Bars

## Wear Bars for Non-Modular Probes

PART NUMBER	PART NAME	DESCRIPTION
389-075-530	Flat Wearbar	Flat Wearbar to mate with probe 115-110-020
389-075-540	Flat Wearbar	Flat Wearbar to mate with probe 115-110-021
389-075-560	Curved Wearbar	Curved Wearbar to mate with probe 115-110-020
389-075-570	Curved Wearbar	Curved Wearbar to mate with probe 115-110-021
389-076-700	Ported Flat Wearbar	Ported Flat Wearbar to mate with probe 115-110-020
389-088-270	Ported Flat Wearbar	Ported Flat Wearbar to mate with probe 115-110-040
389-077-160	Ported Curved Wearbar	Ported Curved Wearbar to mate with probe 115-110-020
389-077-150	Ported Curved Wearbar	Ported Curved Wearbar to mate with probe 115-110-021
389-088-280	Ported Curved Wearbar	Ported Curved Wearbar to mate with probe 115-110-040

## Wear Bars for Modular Probes

PART NUMBER	PART NAME	DESCRIPTION
389-088-270	Ported Flat Wearbar	Ported Flat Wearbar to mate with probe DMARRAY_MOD1
389-088-280	Ported Curved Wearbar	Ported Curved Wearbar to mate with probe DMARRAY_MOD1



# Mentor UT - Select Conventional Probes

PART NUMBER	PART NAME	DESCRIPTION
113-516-002	KBA 525 Dual Element Transducer	Transducer: 10MHz x 5mm
0500495	DA501 Dual Element Transducer	Transducer: 5 MHz x 12.5mm
0500502	DA503EN Dual Element Transducer	Transducer: 2MHz x 16.1mm
113-552-013	DA512 Dual Element Transducer	Transducer: 10MHz x 7.5mm
113-544-224	DA507 Dual Element Transducer	Transducer: 5MHz x 18mm
113-835-721	DUFP Dual Element Transducer	Transducer: 7.5MHz x 7.5mm





# Mentor UT – Calibration Blocks

PART NUMBER	PART NAME	DESCRIPTION
118-540-985	Corr Array Cal Block, Inches	Calibration block for corrosion. Carbon Steel. Inches.
118-540-986	Corr Array Cal Block, Metric	Calibration block for corrosion. Carbon Steel. Metric.
118-540-987	Corr Array Cal Block SST Inches	Calibration block for corrosion. Stainless Steel. Inches.
118-540-988	Corr Array Cal Block SST Metric	Calibration block for corrosion. Stainless Steel. Metric.



# Mentor UT – Accessories

PART NUMBER	PART NAME	DESCRIPTION
112M4767	Mentor EM/UT Softcase	Soft carrying case/RAK for Mentor EM/UT. New model includes attachment for external battery
MENTOR-UTCASE-0001	Mentor UT Shipping Case	Hard-shell travel case for Mentor UT
MENTOR-RBAT-0002	External Battery Pack – Mentor	External Battery Pack Mentor EM/UT
MENTOR-ACPWR-0001	AC/DC Power Supply Kit	AC Power Supply/Charger (with U.S., U.K., and Euro Power Cords)
104-400-508	Mobile Wireless Router	Battery Powered Wireless Router
104M1207	Encoder and Buzzer Module for Mentor	Encoder & Buzzer Module with USB, X/Y/Z Encoder Inputs, and Alarm Outputs



# Corrosion Scanners



# GE SwitchGear Manual Magnetic Scanner



**MANUFACTURER:**  
ScanTech (Texas USA)

**TYPE OF SCANNER:**  
2-axis raster scan

*Motorized scanner  
available soon*

**AVAILABILITY:**  
Order from GE

Part Number	Description
MUT-SWGMANSCAN300	Switchgear manual magnetic scanner – 300mm index coverage
MUT-SWGMANSCAN600	Switchgear manual magnetic scanner – 600mm index coverage
MUT-SWG-CBL3M	Switchgear manual encoder cable – 3 meters
MUT-SWG-CBL6M	Switchgear manual encoder cable – 6 meters
MUT-SWG-CBL10M	Switchgear manual encoder cable – 10 meters
MUT-SWG-CBL16M	Switchgear manual encoder cable – 16 meters
021-383-648	Motorized couplant delivery system with battery backup. Includes case, pump, battery
100N4330	Scanner couplant tubing – Clear PVC tubing, 1/8 ID x 1/4 OD , 50ft. roll



# Other Validated Scanners

Scanner Name	Manufacturer	3 <sup>rd</sup> Party Part #
Mapman Scanner	Phoenix (United Kingdom)	AE-MAPMAN-GEDM
Rotix Manual Scanner	Jireh (Canada)	CEG027
Navic Motorized Scanner	Jireh (Canada)	CXG002

## Testing and Validation

Mentor UT is also designed to work with a variety of aftermarket scanners.


This is a list of aftermarket scanners that are currently tested and validated to work with Mentor UT. It is not intended to be an all-inclusive list, and will be updated over time.



# Software and Apps

The screenshot displays the GE Create software interface, titled "Create powered by GE Inspection Technologies". The main window shows a "Welcome to Mentor Create" message and a list of workflows. A "Workflow Details" dialog box is open, showing the configuration for a workflow named "Corrosion DM".

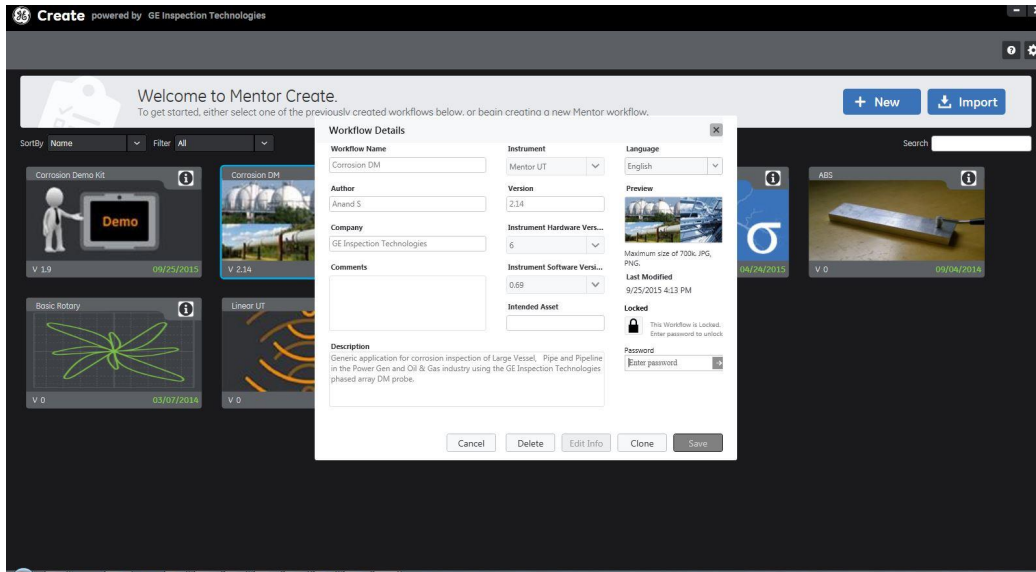
**Workflow Details**

<b>Workflow Name</b> Corrosion DM	<b>Instrument</b> Mentor UT	<b>Language</b> English
<b>Author</b> Anand S	<b>Version</b> 2.14	<b>Preview</b> 
<b>Company</b> GE Inspection Technologies	<b>Instrument Hardware Vers...</b> 6	Maximum size of 700k. JPG, PNG.
<b>Comments</b> <input type="text"/>	<b>Instrument Software Versi...</b> 0.69	<b>Last Modified</b> 9/25/2015 4:13 PM
<b>Description</b> Generic application for corrosion inspection of Large Vessel, Pipe and Pipeline in the Power Gen and Oil & Gas industry using the GE Inspection Technologies phased array DM probe.	<b>Intended Asset</b> <input type="text"/>	<b>Locked</b> This Workflow is Locked. Enter password to unlock.
		<b>Password</b> <input type="password"/>

Buttons: Cancel, Delete, Edit Info, Clone, Save



# Software – Mentor Create



## PLATFORM:

Desktop PC

Developers kit enables creation of custom inspection apps and interfaces for Mentor EM and Mentor UT devices

## GEIT PART NUMBER:

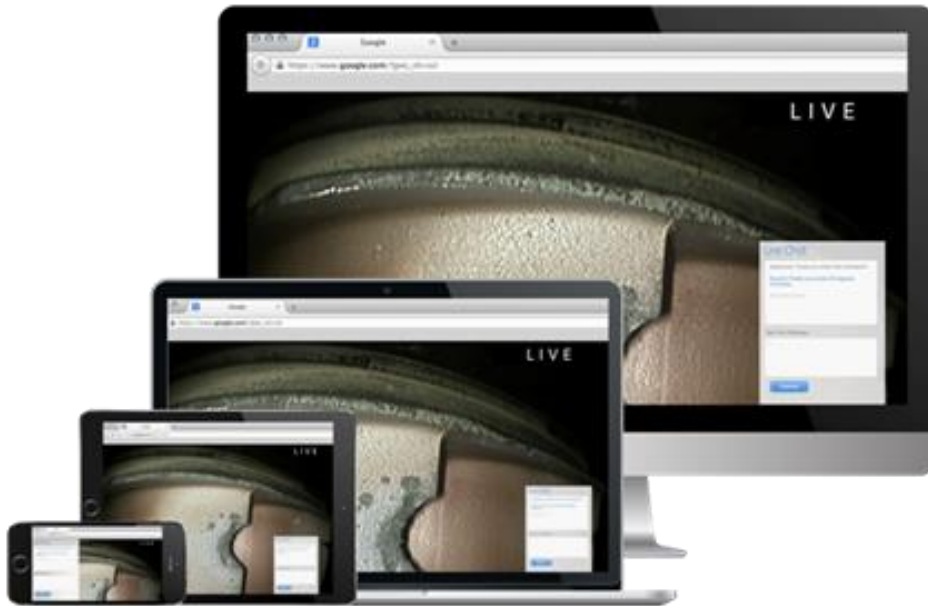
100N4002

## AVAILABILITY:

Included in Mentor UT Base and demo kits



# Software – InspectionWorks Connect



## PLATFORM:

On device/web access

Enables live streaming and collaboration during Mentor iQ and UT inspections

## FREE TRIAL:

Activate 30 day free trial at

[www.inspectionworks.com/support](http://www.inspectionworks.com/support)

## GEIT PART NUMBERS:

IW-CONNECT-UT-1MO	1 month license
IW-CONNECT-UT-3MO	3 month license
IW-CONNECT-UT-1AN	1 year license
IW-CONNECT-UT-3AN	3 year license





