

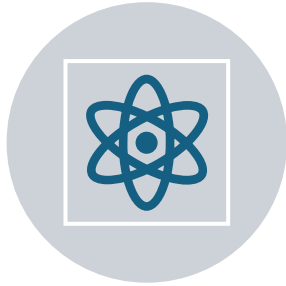
***ETHER NDE***



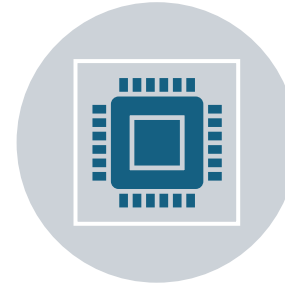
**BonPEC – The New Era in Pulsed Eddy Current  
Instrumentation**

**Global Launch 10<sup>th</sup> March 2026**

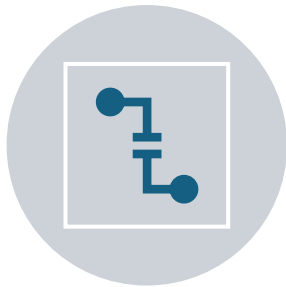
# ETHer NDE Partnership with Rivolve



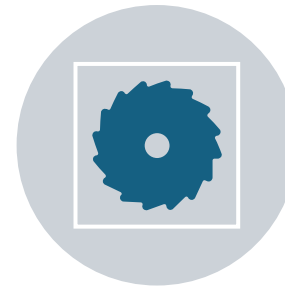
ETHer NDE is the **Exclusive Worldwide Distributor** of the Rivolve Pulsed Eddy Current Technology



ETHer will manufacture the PECT Probes and has paid Rivolve a Technology Transfer Fee in this regard

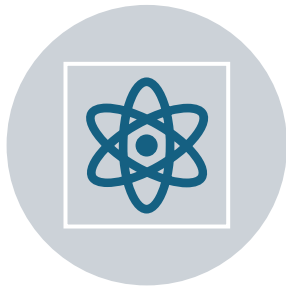


Rivolve retains “Core IP” for the PECT Instrumentation Hardware and Ether will purchase pre-Programmed Chips for Assembly

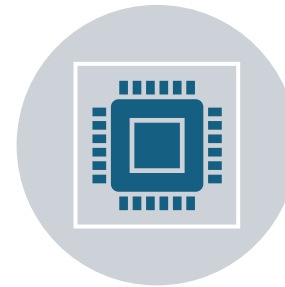


All Mechanical Design is by Ian Gough & Martin Savage

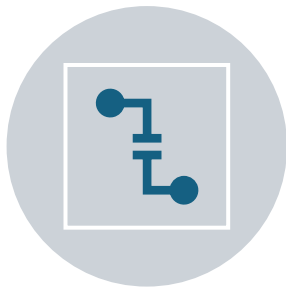
# ETHer NDE Partnership with Rivolve



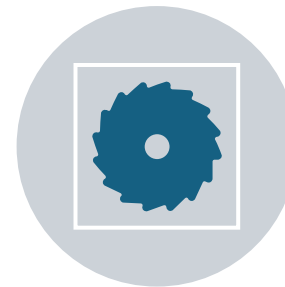
5 year renewable Agreement between Ether NDE and Rivolve



Product Development will be pursued jointly between Ether NDE and Rivolve



Expect new application solutions and novel Probe designs, based on market demands, from 2027 onwards



Positional Probe-tracking in development

# WHY BonPEC

Around 60 years of PECT experience within Rivolve's Team; ETHERNDE: 60+ Years combined PECT Applications & Sales Experience

State-of-the-art Pulsed Eddy Current Technology

All Probes feature a field guard ring to shield from external structures e.g. supports and welds

Measures between 2 to 65mm wall thickness, up to 250mm lift-off

Complete System "out of the box"  
Two Probes included in the Standard Kit

True field portability  
Entire System fits in one rugged transport case

Lower Purchase Costs  
No Annual software subscription Fees, Lower Lifetime Costs

High operational flexibility  
Wide temperature range  
(-150°C to 500°C)



**KIT, BonPEC, Pulsed Eddy Current (PEC) Instrument, Flaw Detector + 14" Rugged Notebook (Hot-Swap Battery, Touch Screen + Keyboard). Including:**

**Instrument**, BonPEC, Pulsed Eddy Current (PEC) Instrument, Flaw Detector.

**Accessory**, BonPEC - Power Adapter + Input Plugs (UK, EU, US & Australia)

**Accessory**, Lead, Lemo 8-Way - Lemo 8-Way, 10m, BonPEC

**Probe P10**, BonPEC, Pulsed Eddy Current, Lift-Off Range: 0-20mm

**Probe P50**, BonPEC, Pulsed Eddy Current, Lift-Off Range: 25-100mm

**Notebook** - Getac S410 G5, i5-1340P, 8GB RAM, 256GB PCIe SSD, , FHD & Touchscreen (1920x1080), (Without Webcam), Windows 11 Pro (GETAC: ST2D5AQ3SDXX)

**Accessory**, Adjustable Padded Shoulder Strap Quick-Release Clips

**Accessory**, BonPEC Hard Carry Case, Wheeled, extendable Handle

**Software**, BonPEC - Data Analysis, Storage & Reporting Software

**USB Lead** - USB 2.0, Male USB A to Male USB B, 1.8m



**KIT, BonPEC, Pulsed Eddy Current (PEC) Instrument, Flaw Detector + 11.6" Rugged Tablet PC (Hot-Swap Battery (10 hours), Touchscreen + Keys). Including:**

**Instrument**, BonPEC, Pulsed Eddy Current (PEC) Instrument, Flaw Detector.

**Accessory**, BonPEC - Power Adapter + Input Plugs (UK, EU, US & Australia)

**Accessory**, Lead, Lemo 8-Way - Lemo 8-Way, 2.5m, BonPEC

**Probe**, BonPEC, Pulsed Eddy Current (PEC), Lift-Off Range: 0-20mm

**Probe**, BonPEC, Pulsed Eddy Current (PEC), Lift-Off Range: 25-100mm

**Rugged Tablet PC** 11.6" - Durabook U11i Rugged Tablet, Windows 11 Pro 8GB RAM 256GB Storage + Power Adapter (Hot-Swap Battery 10 hour Battery, Touch Screen + Keys)

**Accessory**, Adjustable Padded Shoulder Strap Quick-Release Clips

**Accessory**, BonPEC Hard Carry Case, Wheeled, extendable Handle

**Software**, **BonPEC** - Data Analysis, Storage & Reporting Software

**USB Lead** - USB 2.0, Male USB A to Male USB B, 1.8m



# PROBES

## Carbon Steel Pipe

---

**PEC-P0** Probe, **Lift Off Range: 0-7mm**, Nominal Lift Off: 0mm, Wall Thickness at Nominal Lift Off: 1-10mm

---

**PEC-P10** Probe, **Lift Off Range: 0-20mm**, Nominal Lift Off: 10mm, Wall Thickness at Nominal Lift Off: 2-20mm

---

**PEC-P30** Probe, **Lift Off Range: 15-60mm**, Nominal Lift Off: 30mm, Wall Thickness at Nominal Lift Off: 2-30mm

---

**PEC-P50** Probe, **Lift Off Range: 25-100mm**, Nominal Lift Off: 50mm, Wall Thickness at Nominal Lift Off: 3-30mm

---

**PEC-P100** Probe, **Lift Off Range: 50-150mm**, Nominal Lift Off: 100mm, Wall Thickness at Nominal Lift Off: 3-30mm



# PROBES

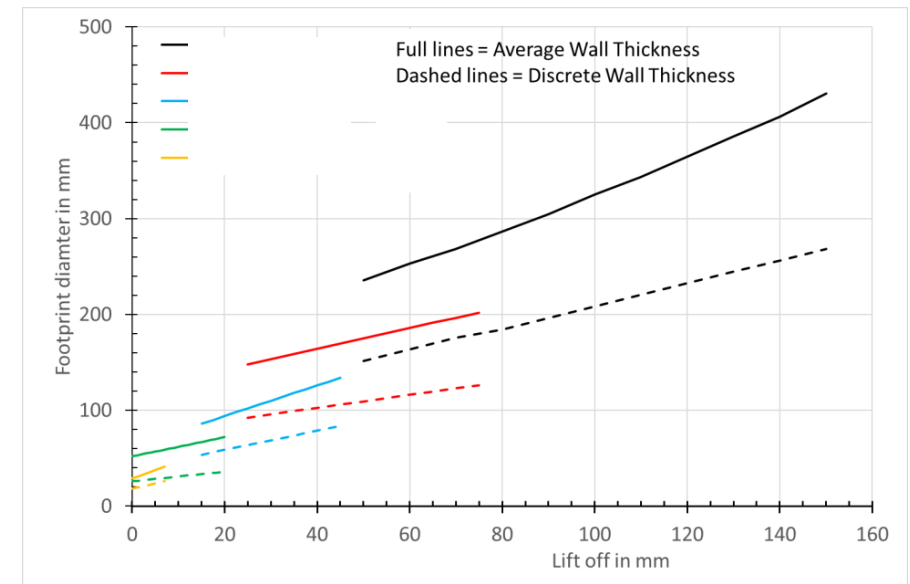
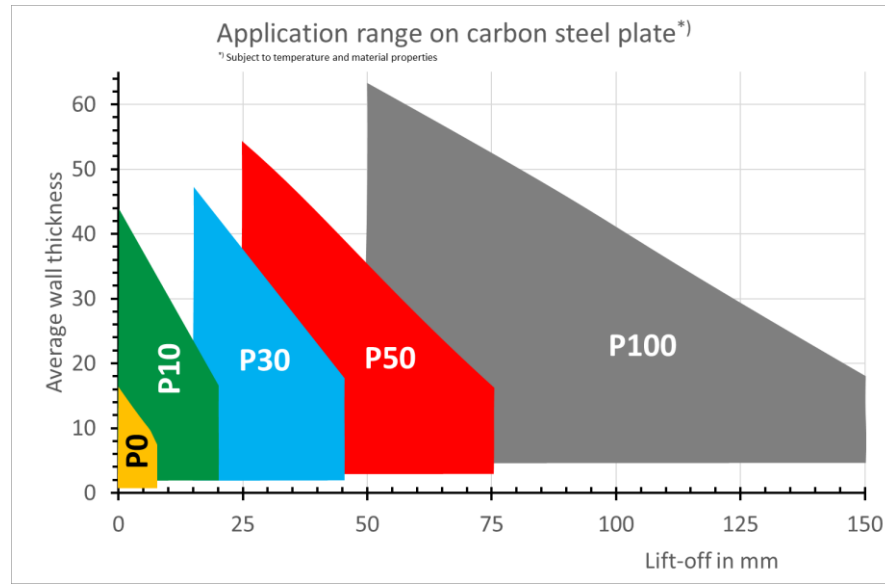
## Carbon Steel Flat Plate



The pulsing time is a function of the object thickness:

Time (ms)	WT (mm)	WT [inches]
50	6	0.25
100	10	0.4
200	14	0.55
500	20	0.8
1000	30	1.2
2000	45	1.8
5000	65	2.55
10000	100	3.94

Probe	Lift Off Range	Nominal Lift Off (mm)	Wall Thickness at Nominal Lift Off (mm)
PEC-P0	0-7 mm	0	1-10
PEC-P10	0-20 mm	10	2-20
PEC-P30	15-45 mm	30	2-30
PEC-P50	25-75 mm	50	3-30
PEC-P100	50-150 mm	100	5-30



BonPEC probes are designed to minimize false readings, hence they are insensitive to metal objects near the probe, except for the object that is right below it.

# PROBES

## Carbon Steel Pipe

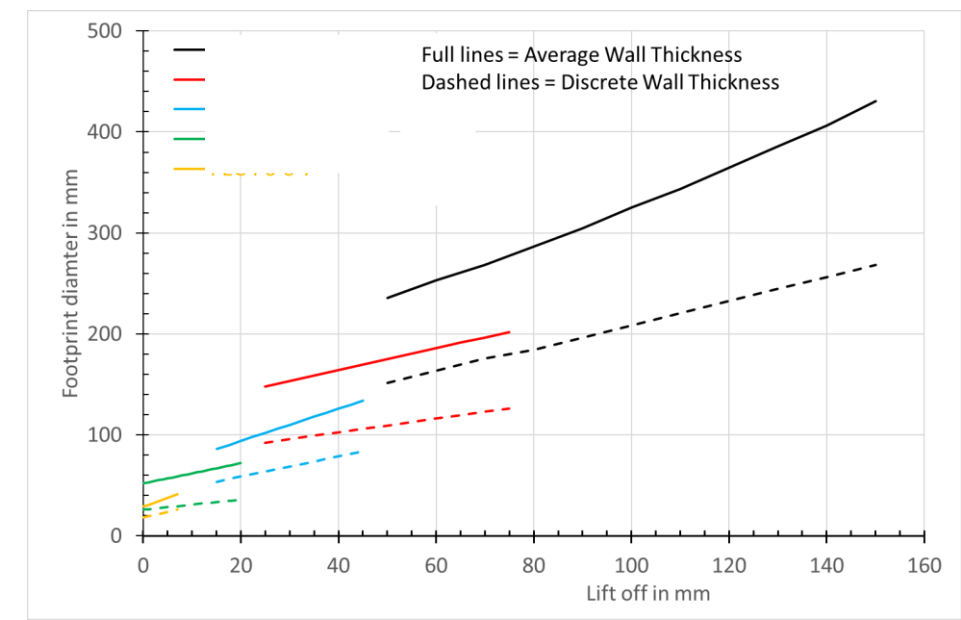
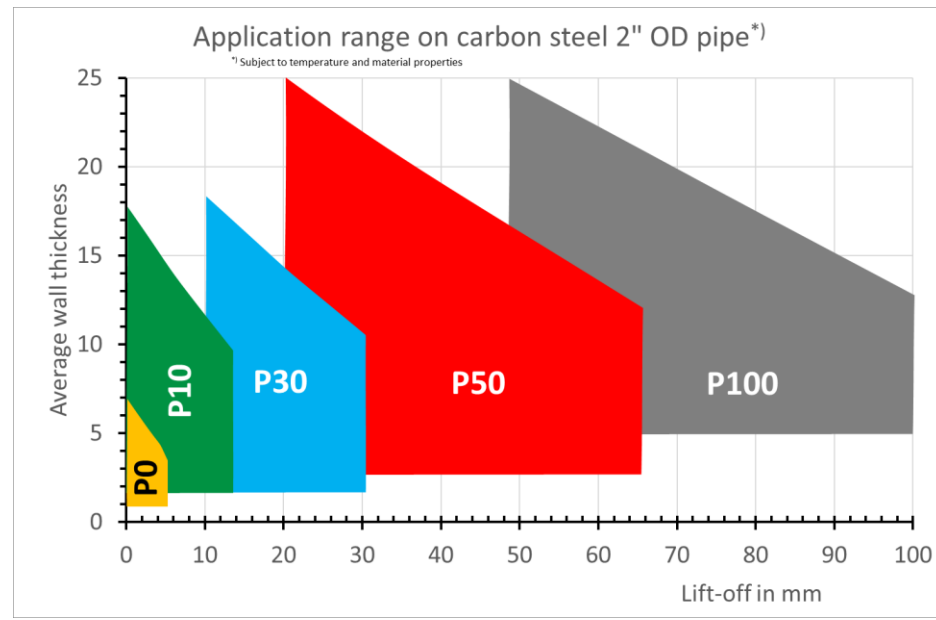


Depending on the lift off and the average wall thickness of the object to investigate, a choice must be made which probe to use to optimize the reliability of the results. The applicable range of each probe depends on the material properties and measurement geometry, most important the lift off and average wall thickness.

Probe	Lift Off Range	Nominal Lift Off (mm)	Wall Thickness at Nominal Lift Off (mm)
PEC-P	0-7 mm	0	1-10
PEC-P10	0-20 mm	10	2-20
PEC-P30	15-45 mm	30	2-30
PEC-P50	25-65 mm	50	3-30
PEC-P100	50-100 mm	100	5-30

The pulsing time is a function of the object thickness:

Time (ms)	WT (mm)	WT [inches]
50	6	0.25
100	10	0.4
200	14	0.55
500	20	0.8
1000	30	1.2
2000	45	1.8
5000	65	2.55
10000	100	3.94



BonPEC probes are designed to minimize false readings, hence they are insensitive to metal objects near the probe, except for the object that is right below it.

# LEADS

<b>ALL08-L08-025-PEC</b>	Accessory, Lead, Lemo 8-Way - Lemo 8-Way, <b>2.5m</b>
<b>ALL08-L08-050-PEC</b>	Accessory, Lead, Lemo 8-Way - Lemo 8-Way, <b>5.0m</b>
<b>ALL08-L08-100-PEC</b>	Accessory, Lead, Lemo 8-Way - Lemo 8-Way, <b>10.0m</b>
<b>ALL08-L08-200-PEC</b>	Accessory, Lead, Lemo 8-Way - Lemo 8-Way, <b>20.0m</b>

# PRICING

## Kits:

**KIPEC003**      KIT, BonPEC, Pulsed Eddy Current (PEC) Instrument, Flaw Detector + **14" Rugged Notebook**



**KIPEC002**      KIT, BonPEC, Pulsed Eddy Current (PEC) Instrument, Flaw Detector + **11.6" Rugged Tablet PC**



**RRP £33,750 / \$44,975**

# PRICING



## Leads:

<b>ALL08-L08-025-PEC</b>	<b>Lead, 2.5m</b>	<b>RRP £395</b>
<b>ALL08-L08-050-PEC</b>	<b>Lead, 5.0m</b>	<b>RRP £450</b>
<b>ALL08-L08-100-PEC</b>	<b>Lead, 10.0m</b>	<b>RRP £495</b>
<b>ALL08-L08-200-PEC</b>	<b>Lead, 20.0m</b>	<b>RRP £595</b>

## Probes:

<b>PEC-P0</b> Lift Off Range: 0-7mm RRP £2,475	<b>PEC-P10</b> Lift Off Range: 0-20mm RRP £3,275	<b>PEC-P30</b> Lift Off Range: 15-60mm RRP £4,275	<b>PEC-P50</b> Lift Off Range: 25-100mm RRP £4,675	<b>PEC-P100</b> Lift Off Range: 50-150mm RRP £5,995
---	---	--	---	--

# **ETHER NDE**



BonPEC Standard Discounts;

20% for Standard Kit, 15% on additional Probes and Leads

Demo Equipment offer:  
Webinar Special, valid until  
**07APRIL26**

**40%**

CONDITIONS:

Minimum 35% payment with order.

Limited to 5-off

First Come, First Serve

Demo Equipment offer:  
Webinar Special, valid until  
**05MAY26**

**35%**

CONDITIONS:

Minimum 35% payment with order.

Limited to 5-off

First Come, First Serve

# Features and Benefits

- **Viable single person operation**
- **Compact, lightweight: single-wheeled rugged case**
- **Shielded Probe design protects against false calls and minimizes interference from external objects**
- **Lower Purchase Cost, Lower Calibration Cost**
- **Fully-featured Software, with User Access Level control included**
- **EtherCover**
- **Unique Product Lifetime Support Guarantee**

**SHIPPING NEW ORDERS FROM 22APRIL26**

# **Service Company Package Offer**

**Products Eligible: ACE, BonPEC, ETi-300 / ETi-350, IRIS 9000+, TruFlux, TruFlux Mini**

**Order any TWO from above and Your Discount will be up to 25%**

**Order any THREE of these Products and Your Discount will be up to 30%**

**Conditions: Ordered on a Single P.O.**

**Minimum Deposit with Order: 35% (Subject to Status)**

**No Time Limit on the Offer / Indefinite**

# **Service Company Package Offer**

**Products Eligible: ACE, BonPEC, ETi-300 / ETi-350, IRIS 9000+, TruFlux, TruFlux Mini**

**Provides You with the Opportunity to pass on Discounts to Your Client, i.e. Service Inspection Company who benefit from Discounts on an “Already Low” Starting Price**

**Or “Mark-Up” Prices by 5 – 10% and make up to £40,000 Margin on a £100k P.O. (Average Value of any 3 Products)**

**Combine Both Options to Benefit Your Client and Your Own Company**



**Any Questions?**



**Thank you for your time!**

Rogério Carvalho  
Export Sales Manager  
rogerio@ethernde.com  
+44 7761041471